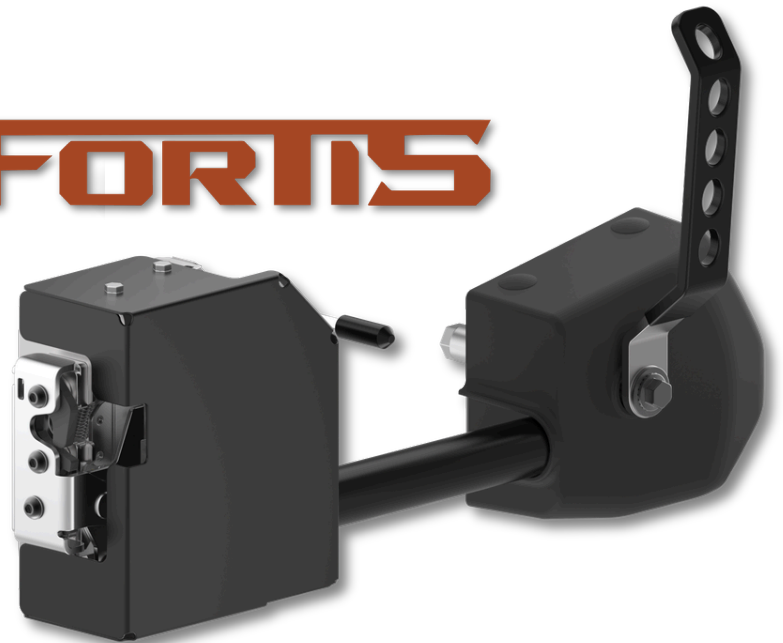



 **TriMark**<sup>®</sup>  
DOOR SYSTEMS  
*Access to Excellence*



**SALUS**

**FORTIS**



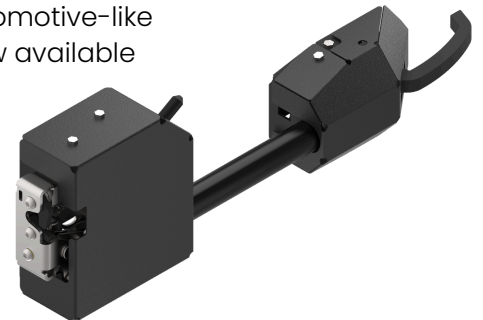
TriMark's line of NEW  
 **TriGuard** products

All products can be purchased separately or as a complete one-piece module ready for installation. System kits are available and can include TriGuard line of heavy duty latches, linkages, handles and door modules that are specifically developed for heavy duty armored vehicle applications to provide a comprehensive access solution.

## Complete Door Systems

### **100-4100 TriGuard Heavy Duty Door Module - V2**

This heavy-duty, pre-engineered door system module provides automotive-like functionality. This low profile, easy to install one-piece module is now available with a rotating lever exterior handle and a second remote latch. Featuring TriMark's 050-1600 Heavy Duty Latch, it is compliant to FMVSS 206 (ECE R11) strength requirements.



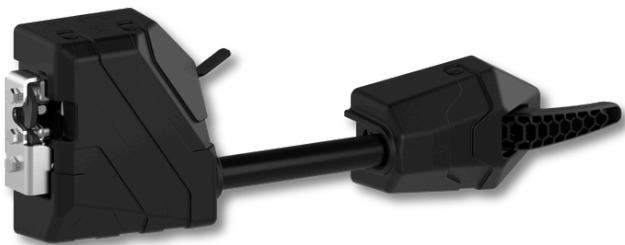
**NEW**

### **100-4125 and 100-4150 TriGuard Heavy Duty Door Modules - Salus and Fortis**

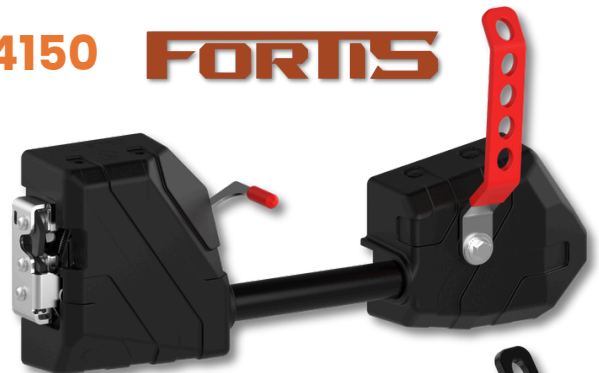
Building on the success of the 100-4100 TriGuard Heavy Duty Door Module - V2, is now available in two additional variations; the 100-4125 features a simplified design with plastic covers saving weight and overall cost. Named Salus, the mounting holes, handrail, latch position and overall function are identical to the original V2. Additionally, the 100-4150 is called Fortis and offers an inside lever handle for blast lock activation. Both new products feature TriMark's 050-1600 Heavy Duty Latch, allow manual and power locking and are compliant with FMVSS 206 (ECE R11) strength requirements.

### **100-4125 SALUS**

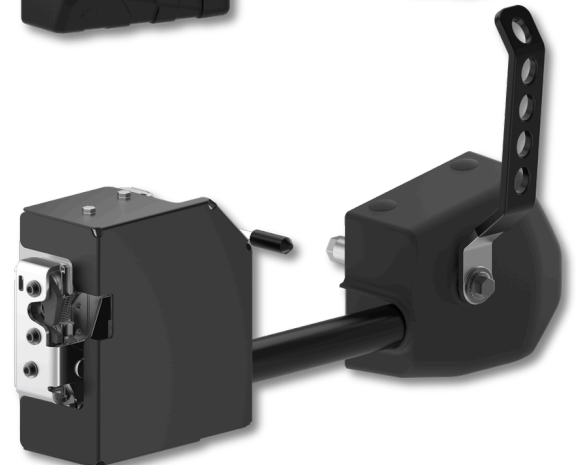
### **100-4150 FORTIS**



Plastic Cover



Steel Cover



## **Latches/Locks**

### **020-0900 Two Rotor Remote Inside Squeeze**

This product was specifically designed for off-highway vehicle applications including agricultural and construction equipment that require a remote inside release. The robust construction is incorporated into round tubing for support for the opening and closing functions of the door and provides for greater ease of operation (ergonomics) over direct releases.



### **050-0100 Two Rotor Latch**

This versatile two rotor latch is designed for medium to heavy-duty applications for on or off-highway entrance doors, compartments and access panels. It features a variety of trip levers and mounting axles for ease of mounting and applications and is FMVSS 206 (ECE R11) compliant.



### **050-0400 Floating Striker Single Rotor Latch**

This robust single rotor latch is designed for medium to heavy-duty applications for on or off-highway entrance doors, compartments and access panels. It features a vertical clearance rotor for high vibration applications and is available in a variety of trip levers and mounting axles for ease of mounting/application and is FMVSS 206 (ECE R11) compliant.



### **050-0850 TriGuard Heavy Duty Latch Module with Slam Cam Option**

This heavy duty latch module is designed for medium to heavy-duty entrance and rear door applications. It features a proven single rotor latch design and high strength 8 gauge (4.2mm) front mounting plate with flange mounting.



**Self-aligning "slam cam" is available for the 050-0850 and 050-1600 latches**



### **050-1600 TriGuard Heavy Duty Latch**

This heavy-duty single rotor latch is designed for medium to heavy-duty vehicle entrance and rear door applications. It features a proven single rotor latch design, high strength 8-gauge (4.2mm) front mounting plate and robust straddle mount release lever. This slim design mounts into 2.00 in. (50.8mm) doors and retrofits competitive single rotor wedge style rotary latches.



### **050-1900 8mm Single Rotary Latch**

TriMark's latest innovation in rotary latches features a robust modular design that offers extensive actuation locations and options providing application flexibility in a compact design. Designed for medium to heavy-duty applications for on or off-highway applications, this single rotor latch is available to meet FMVSS 206 (ECE R11).



### **140-0100 TriGuard Heavy Duty Cam Lock**

This heavy duty cam lock module is designed to be located in high stress areas and used as a primary latching mechanism for securing personnel doors, rear doors, hatches and windows or as a secondary mechanism in conjunction with a primary door latch. Providing additional strength and security, it can be used singularly or in multiples and can be operated and controlled via rods or cables from a central release such as TriMark's 010-1000 Rotating Lever Handle.



## Handles



### **010-1400 and 010-1000 Exterior Rotating L-Handle**

This robust exterior door handle is fabricated from high strength plate steel and includes the mounting details and drive elements for installation ease.



### **020-0100 Assist Grab Handle**

This strong, lightweight and flexible grab handle is manufactured from tough nylon webbing for strength and durability. The molded comfort-grip handle is pliable and can be used in areas where occupants might impact them. They can withstand a load of 400 lbs. and are easily mounted with two bolts. Overall dimensions are 9.0 in. long X 1.25 in. wide.



### **020-0800 Pull Handle**

Specifically designed for off-highway vehicle applications that require a surface mounted exterior handle. Allowing greater ease of operation (ergonomics) than conventional push button or paddle handles and offers robust construction and rugged styling



### **040-0600 TriMount Push Button Handle**

The 040-0600 TriMount Push Button Handle was specifically designed for off-highway vehicle applications that require a surface mounted exterior push button handle with 120mm or 163mm mounting pattern. Available Padlocking version (PN 19466-14)



## Hinges/Accessories



### **200-0800 Heavy Duty Surface Mount Butt Hinge**

This robust surface mounted hinge measures 6 in. (152.4mm) high and 5 in. (127mm) wide, is manufactured out of .50 in. (12.7mm) steel and is duty-rated at 2,000 lbs. (907 kg) maximum capacity when used as a set. Featuring a removable hinge pin and a choice of CARC finishes, it is well suited for armored vehicle applications.

**Custom versions are also available**

TriMark offers a variety of companion components designed to complement and provide a complete door system including door strikers, rods, power lock actuators, fasteners, bushings, custom covers and weldments.

### **TriMark Corporation**

500 Bailey Avenue  
P.O. Box 350  
New Hampton, IA 50659  
United States  
Tel: +1 641 394 3188  
tips@trimarkcorp.com  
www.trimarkcorp.com

### **TriMark Europe**

Unit 3 Sence Court  
Bardon Hill  
Coalville LE67 1GZ  
United Kingdom  
Tel: +44(0) 1530 512460  
sales@trimarkeu.com  
www.trimarkcorp.com

